

Mezzanine Inspection Report

Date: 3/9/2015	Station Name: F11 Branch Avenue	Mezzanine #: 089	Completed By: Mike Butler
-----------------------	----------------------------------------	-------------------------	----------------------------------

Summary

Pull string installation completed for communication duct in faregate array, however video scoping could only be partially completed due to an obstruction. Video scoping was completed for power duct in faregate array.

Video scoping and pull string installation was completed in an alternate empty walker duct between the Kiosk and wall opening in Room C203 (see photos). The alternate empty duct was identified after scanning of the mezzanine. Pull string was also installed in the overhead power conduit between wall opening and AFC Panel in Room C203.

Refer to drawings and photos for additional information.

Scoping of Faregate Array(s)

Task	Yes/No	Notes
Communications Duct – Faregate Array (9 gates)		
Was video scoping completed for the entire duct run?	No	Refer to "WMATA Branch Ave 6inch Comm Duct to Faregate 3-9.avi" and "WMATA Branch Ave 3inch Comm Duct to Faregate 3-9.avi".
Were pull strings installed at all faregates in the array?	Yes	
Were there any obstructions or blockages? Provide details of type and specific location.	Yes	Metal insert at the 1 st gate prevented video scoping of 6" and 3" communication ducts.
Is the duct at capacity? Provide additional details about the dimensions of ducts and number of wires.	No	3" and 6" walker ducts with less than 10 wires.
Power Duct - Faregate Array (9 gates)		
Was video scoping completed for the entire duct run?	Yes	Refer to "WMATA Branch Ave 6inch Power Duct Faregates Video.avi"
Were there any obstructions or blockages? Provide details of type and specific location.	No	
Is the duct at capacity? Provide additional details about the dimensions of ducts and number of wires.	NO	6" walker duct with approximately 20 wires.

10

10


Scoping of Power Duct - Kiosk to AFC Panel		
Task	Yes/No	Notes
Kiosk to wall opening in Room C203 (Distance: 58')		
Was video scoping completed for the entire duct / conduit run?	Yes	Refer to "WMATA Branch Ave 6inch Power Kiosk to JBOX.avi"
Was pull string installed?	Yes	
Were there any obstructions or blockages? Provide details of type and specific location.	No	
Is the duct / conduit at capacity? Provide additional details about the dimensions of duct / conduit and number of wires.	No	Empty 6" walker duct.
Wall opening to AFC Panel in Room C203 (Distance: 25')		
Was video scoping completed for the entire duct / conduit run?	No	Video scoping not required in conduits.
Was pull string installed?	Yes	
Were there any obstructions or blockages? Provide details of type and specific location.	No	
Is the duct / conduit at capacity? Provide additional details about the dimensions of duct / conduit and number of wires.	No	Empty 1 1/2" conduit.
Observations / Issues / Next Steps		
<p>Total distance of power route from Kiosk to AFC Panel is 83', including 58' of existing duct and 25' of existing overhead conduit.</p> <p>An AFC as-built drawing is not available for this mezzanine.</p>		
Sign Off		
	GFP Representative	WMATA PRGM
Name:	Mike Butler	
Signature:		
Date:	3/13/2015	

Photo #1 – Existing duct layout on mezzanine floor



Photo #2 – Existing duct layout on mezzanine floor



Photo #3 – Wall opening inside Room C203

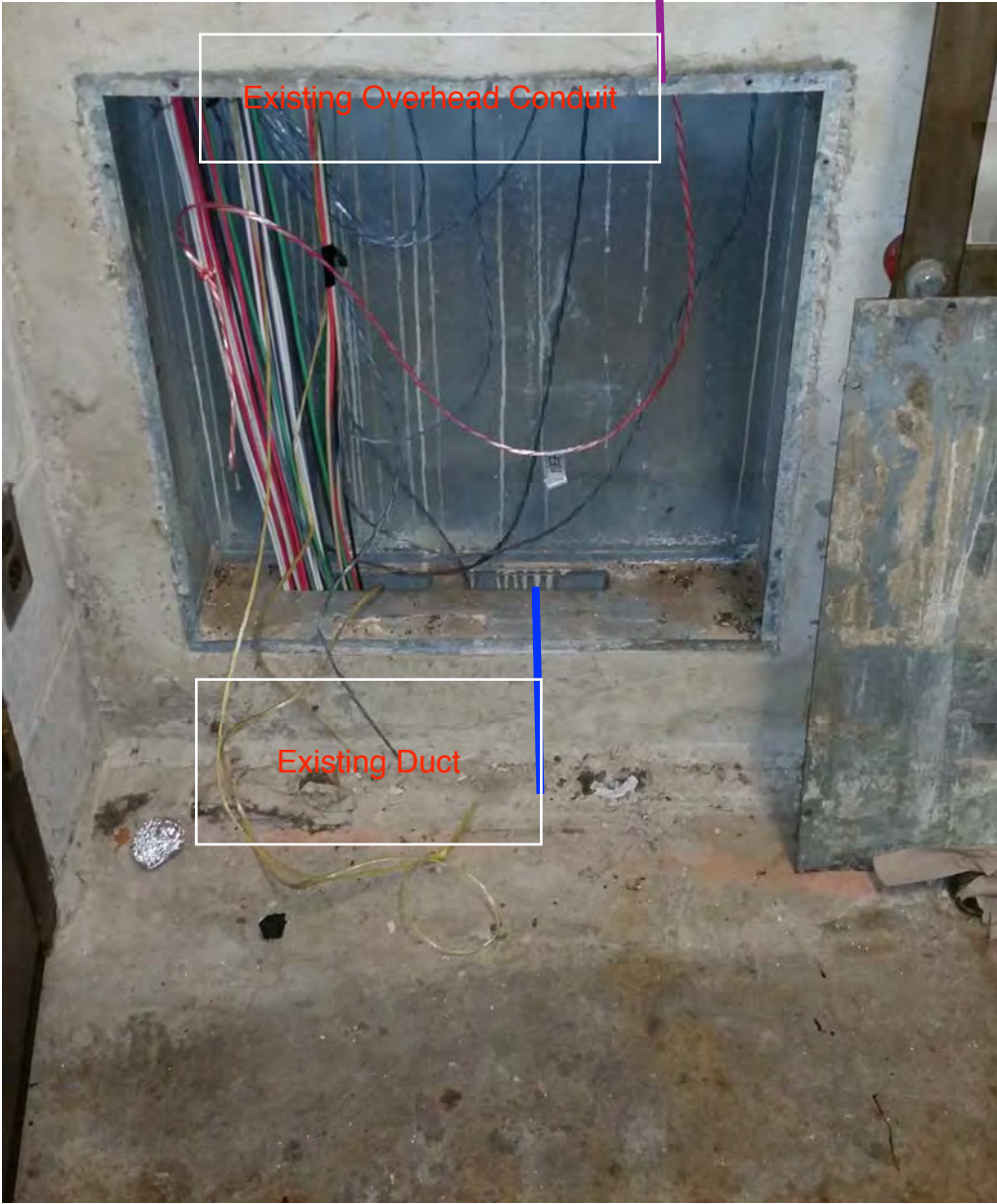
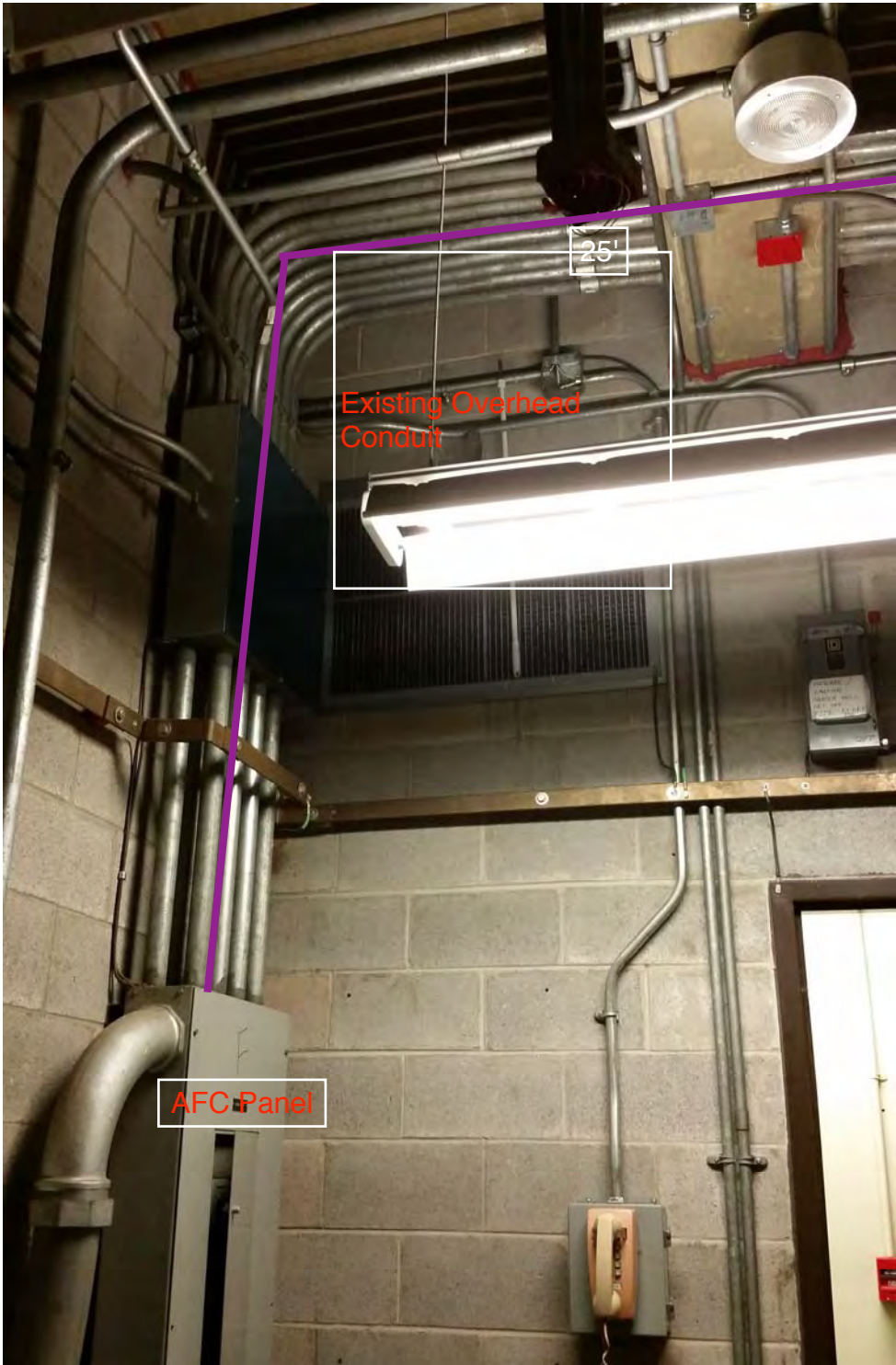
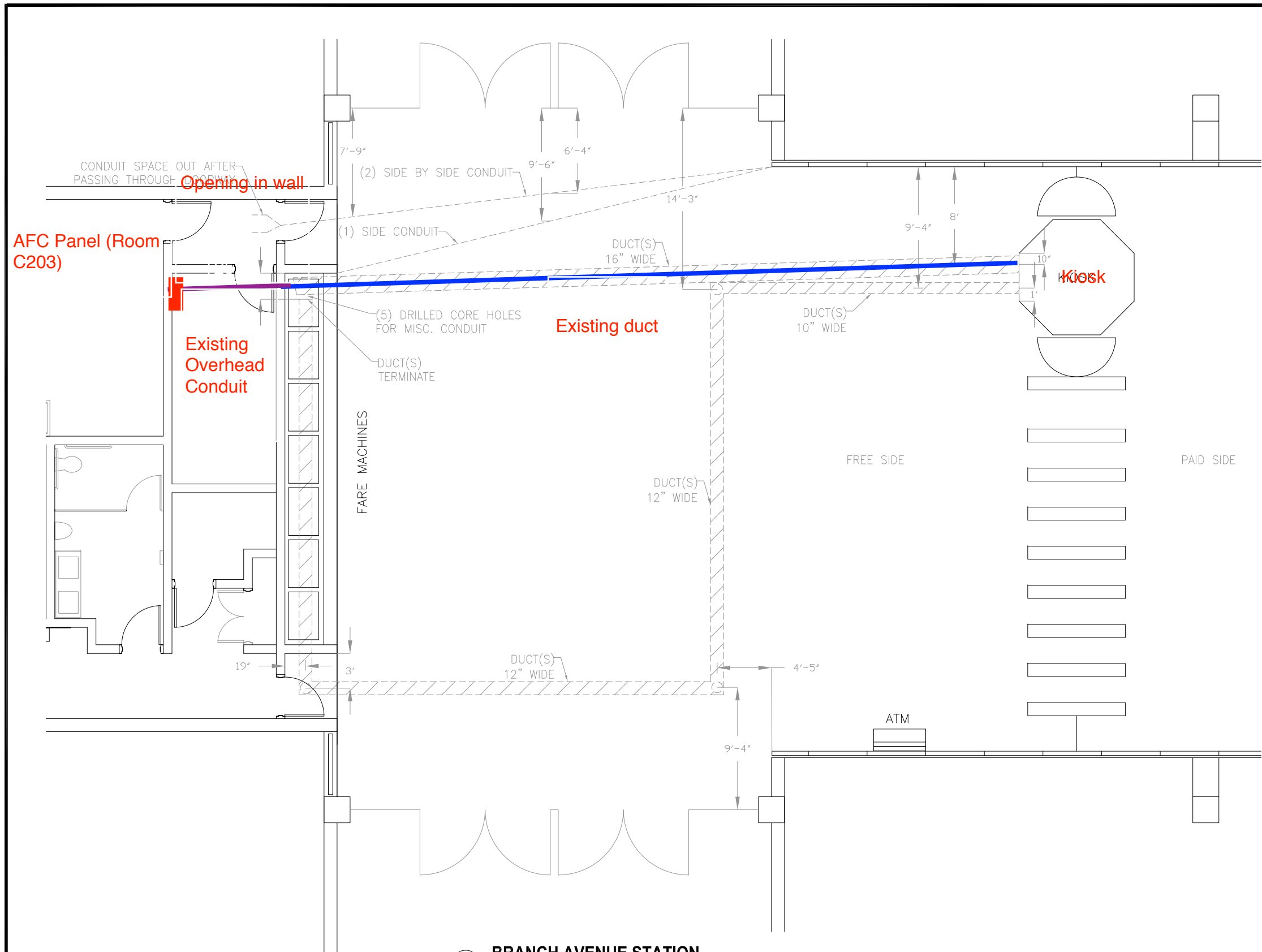


Photo #4 – Existing conduit run to AFC Panel

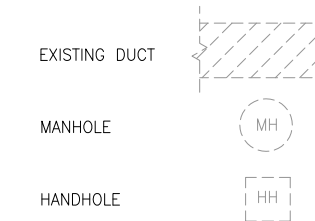




PLAN NOTES:

1. DIMENSIONS ARE IN FEET AND INCHES.
2. DIMENSIONS ARE FOR REFERENCE ONLY.
3. EXISTING IN-FLOOR DUCTS/CONDUITS WERE IDENTIFIED USING A PORTABLE GPR SCANNING DEVICE.
4. THE SCANNING COVERAGE IS LIMITED TO THE MEZZANINE FLOOR ONLY.
5. GPR SCANNING HAS THE FOLLOWING LIMITATIONS: (i) 12 INCHES VISIBLE SCANNING DEPTH; (ii) VISIBILITY BEYOND CONGESTED OR NEAR SURFACE REINFORCEMENT LAYERS; (iii) DETECTION OF PVC AND OTHER NON-METALLIC OBJECTS (iv) DETERMINATION OF SIZE AND EXTENTS OF SUBSURFACE ANOMALIES SUCH AS SLAB VOIDS OR REBAR SIZES; AND (v) VISIBILITY WHEN VARIABLE MOISTURE CONDITIONS EXIST IN THE SUBSTRATE.

LEGEND:



1
E-100
BRANCH AVENUE STATION
SCALE: NOT TO SCALE

CONTRACT NO.
XXXXXX

DESIGNED	C. LOOSE	02-15
		DATE
DRAWN	C. LOOSE	02-15
		DATE
CHECKED	M. BUTLER	02-15
		DATE
APPROVED		
		DATE

REFERENCE DRAWINGS	
NUMBER	DESCRIPTION

REVISIONS		
DATE	BY	DESCRIPTION

APPROVED _____

WASHINGTON METROPOLITAN AREA TRANSIT AUTHORITY
DEPARTMENT OF TRANSIT INFRASTRUCTURE AND ENGINEERING SERVICES
OFFICE OF INFRASTRUCTURE RENEWAL PROGRAM

GFP A Gannett Fleming/Parsons JOINT VENTURE
SUBMITTED _____
PROJECT MANAGER

SCALE
NOT TO SCALE

15-NEPP-01
IN - FLOOR DUCT INSPECTIONS
F11 Branch Avenue
EXISTING DUCT LAYOUT
DRAWING NO.
F11-E-100

XXX